

Version:  
February 28, 2017

# DIRECT

## Electronics Tech.

### (XT MT)

# Triple Trap Filters

Web: [www.direct-token.com](http://www.direct-token.com)

Email: [rfq@direct-token.com](mailto:rfq@direct-token.com)

**Direct Electronics Industry Co., Ltd.**

**China:** 12F, Zhong Xing Industry Bld., Chuang Ye Road,  
Nan Shan District, Shen Zhen City,  
Guang Dong, China 518054  
Tel: +86 755 26055363; Fax: +86 755 26055365

**Taiwan:** No.137, Sec. 1, Zhongxing Rd., Wugu District,  
New Taipei City, Taiwan, R.O.C. 24872  
Tel: +886 2981 0109 Fax: +886 2988 7487

**▶ Product Introduction****Direct (XT MT) are Murata Triple Trap Filters TPT Compatible.****(XT MT) Triple Trap Filter Quick Selection :**

- Dimensions (Unit: mm): 10.0 max × 8.0 max × 4.0 max.
- XT01MT Cener Frequency  $f_{01}$ :5.500MHz;  $f_{02}$ :6.000MHz;  $f_{03}$ :6.500MHz; 30db min @ $f_{01}$ &  $f_{02}$ ; &  $f_{03}$ ; 50(kHz)min@ $f_{01}$  30dB Att BW
- XT02MT Cener Frequency  $f_{01}$ :5.500MHz;  $f_{02}$ :5.742MHz;  $f_{03}$ :6.500MHz; 30db min @ $f_{01}$ &  $f_{02}$ ; &  $f_{03}$ ; 50(kHz)min@ $f_{01}$  30dB Att BW
- XT03MT Cener Frequency  $f_{01}$ :5.500MHz;  $f_{02}$ :5.742MHz;  $f_{03}$ :6.000MHz; 30db min @ $f_{01}$ &  $f_{02}$ ; &  $f_{03}$ ; 50(kHz)min@ $f_{01}$  30dB Att BW

**Features :**

- Good performance of attenuation, three-terminals trap filter, and space saving for Multi set.

The characteristic of a three-terminal ceramic trap equals two two-terminal ceramic traps. Three-terminal ceramic trap has a monolith structure formed from 2 ceramic resonators.

Trap filter is a ceramic filter passes only particular frequency. To the contrary, Band Eliminate Filter (B. E. F.) which blocks or attenuates particular frequency is called trap.

Sound trap for TV set is one of the famous examples of B. E. F. In TV set, video signal is used in picture amplitude circuit after video signal detection block, ceramic resonator is inserting here and trap circuit is formed in order to eliminate sound signal involved in video signal.

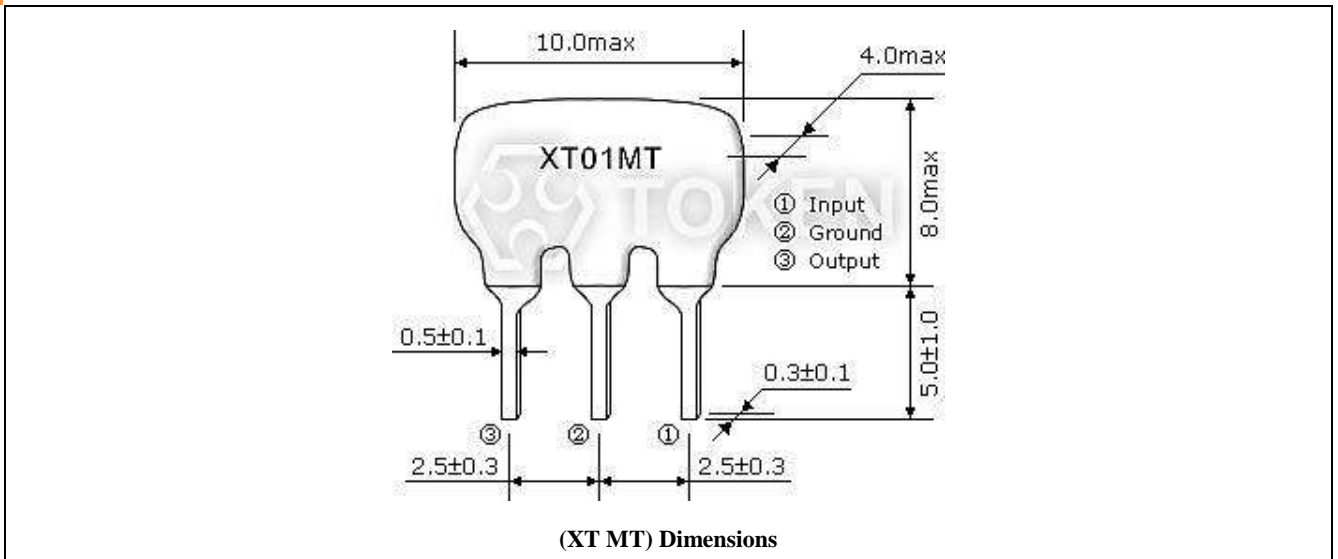
Direct (XT MT) Ceramic Trap Filters (compatible to Murata TPT) series consist of 3 wafers with 3 trap frequencies. Recommended for Multi standard sets.

Full line products meet RoHS compliant. Direct will also produce devices outside these specifications to meet specific customer requirements, contact us with your specific needs. For more information, please link to Direct official website "[Ceramic Trap Filters](http://www.direct-token.com)".



► **Dimensions**

**Dimensions (XT MT)**



► **Characteristics**

**Characteristics (XT MT)**

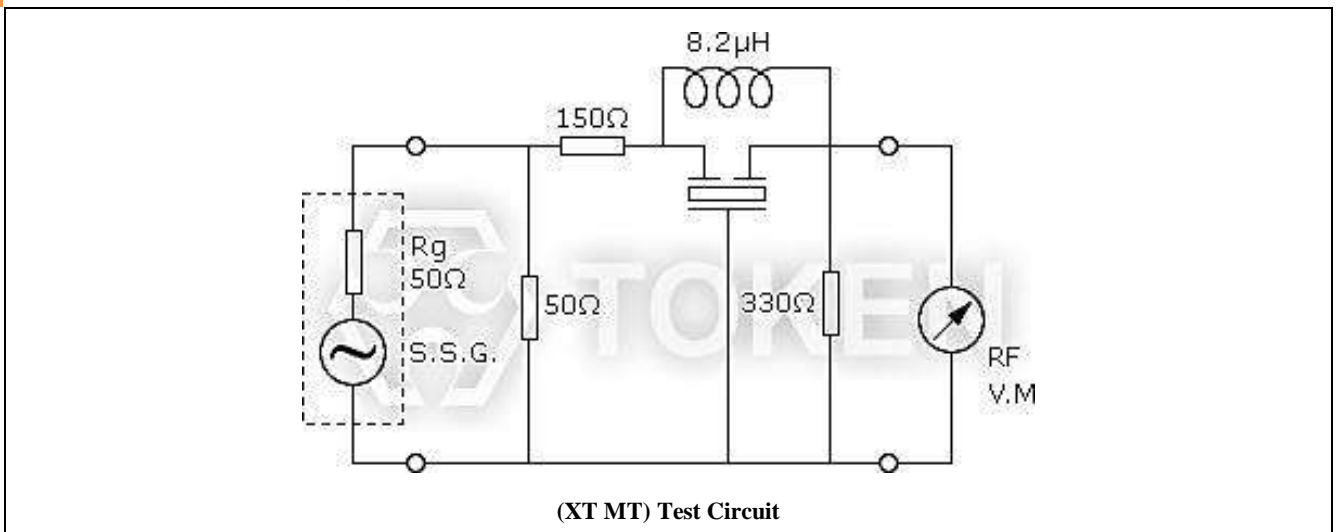
Part Number	Center Frequency (fo1)(MHz)	Center Frequency (fo2)(MHz)	Center Frequency (fo3)(MHz)	Attenuation (at fo1) (dB)min	Attenuation (at fo2) (dB)min	Attenuation (at fo3) (dB)min	30dB Attenuation BW (fo1)(kHz)min
XT01MT	5.500	6.000	6.500	30	30	30	50
XT02MT	5.500	5.742	6.500	30	30	30	50
XT03MT	5.500	5.742	6.000	30	30	30	50

- The level at 1MHz shall be made for a reference (0dB).



▶ **Test Circuit**

**Test Circuit (XT MT)**



▶ **Order Codes**

**Order Codes (XT MT)**

XT02MT	P
Part Number	Package

▶ **General Information**

**Advantage of Direct Piezoelectric Trap Filters**

Direct Electronics had been able to develop specialized piezo materials which when combined with an advance design have resulted in a complete line of practical, inexpensive piezo devices for entertainment and communications applications.

Direct reliably deliver high-quality components according to the each customer special needs with respect to performance, costs, and technology modifications.

For marketing discontinuations or sourcing activities concerning Piezoelectric "Trap" products, you are encouraged to contact our Sales Department so the request can be properly directed within Direct.